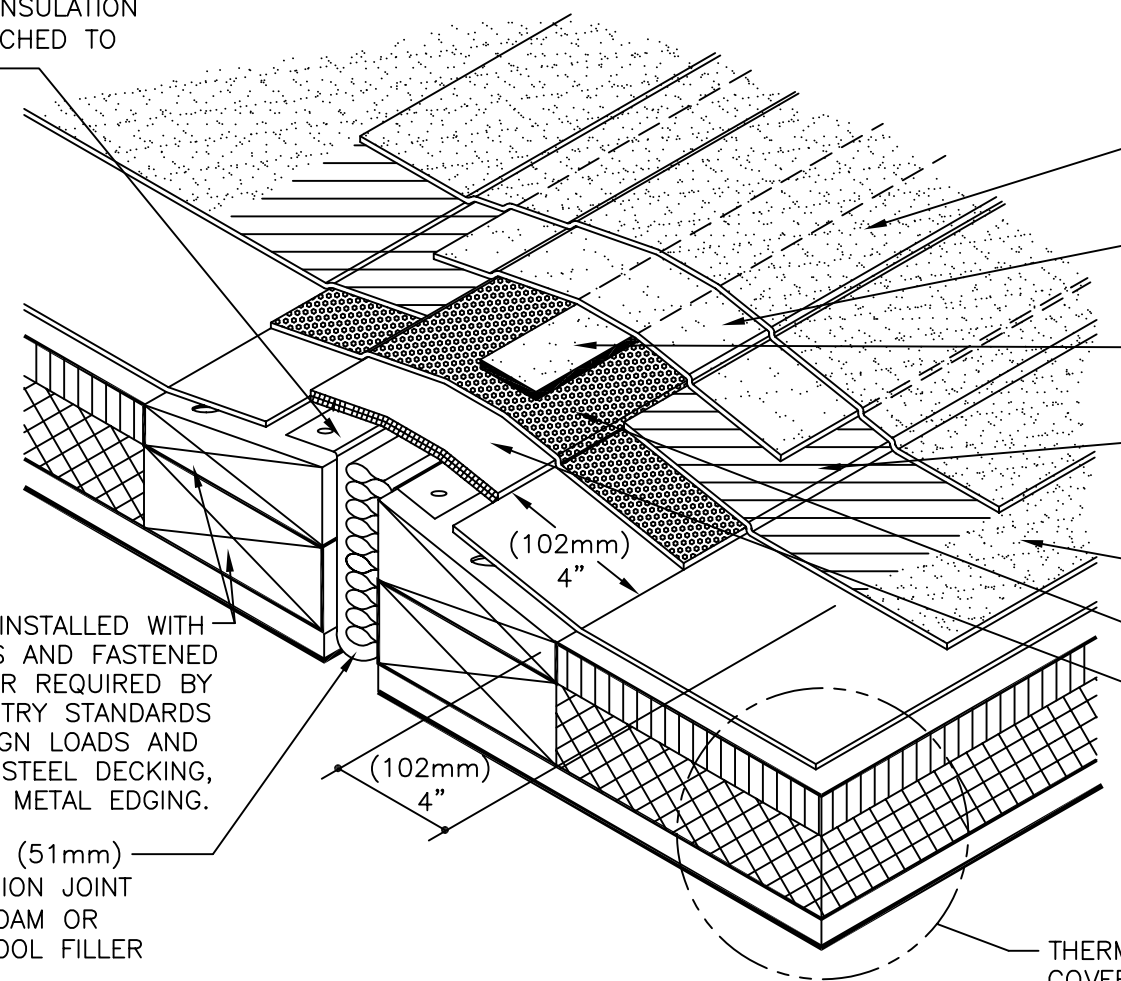


FLEXIBLE VAPOR RETARDER TO SERVE AS INSULATION RETAINER, ATTACHED TO WOOD NAILER

WOOD NAILERS INSTALLED WITH BOND BREAKERS AND FASTENED AS SPECIFIED OR REQUIRED BY CODE OR INDUSTRY STANDARDS TO RESIST DESIGN LOADS AND CORROSION OF STEEL DECKING, FASTENERS AND METAL EDGING.

2" MAX (51mm) EXPANSION JOINT WITH FOAM OR ROCKWOOL FILLER




SOPRALENE EXPANSION FIELD CAP MEMBRANE PLY.
 SOPRALENE FIRST PLY EXPANSION MEMBRANE EXTEND MIN 3" (76mm) ONTO FIELD CAP.
 BOND BREAKER, 4" MIN (102mm)
 ON HEAT WELDED FLASHINGS EMBED GRANULES AT TIE-IN AREAS.
 FIELD CAP MEMBRANE PLY
 SOPRAJOINT
 CUSHION AND SUPPORT SHEET FOR SOPRAJOINT.

THERMAL INSULATION, COVERBOARD AND ROOFING PLIES APPLIED TO DECK AS SPECIFIED OR REQUIRED

NOTES:

1. DETAIL TO BE USE IN CONJUNCTION WITH SOPREMA GENERAL REQUIREMENTS, APPLICATION METHODS AND APPROVED DETAILS.
2. SOPREMA ADHESIVES, CEMENTS, MASTICS, PRIMERS AND SEALANTS ARE REQUIRED WHERE INDICATED.
3. ON HOT ASPHALT AND COLD ADHESIVE SYSTEMS, FIELD BASE AND CAP MEMBRANES MUST BE FASTENED 8" O.C. (203mm) STAGGERED FLUSH W/ ONE INCH HEADED SS CAP NAILS INTO WOOD NAILER OR WITH SS SCREWS WITH ACQ WOOD & PLATES 12" O.C. (30.5cm) INTO THE ACCEPTABLE DECK.

		310 QUADRAL DRIVE	
		WADSWORTH, OHIO 44281 (330) 334-0066	
TITLE RAISED CONTROL JOINT DETAIL			
SCALE NONE	DWN DMT	CHK PR	APPROVAL DATE 9/1/05
DRAWING NUMBER AEJ-003			REV 0

** USAGE OF THIS DRAWING IS GOVERNED BY THE TERMS OF SERVICE FOR SOPREMA DETAIL. PLEASE CONSULT THESE TERMS OF SERVICE PRIOR TO UTILIZING THIS DRAWING.