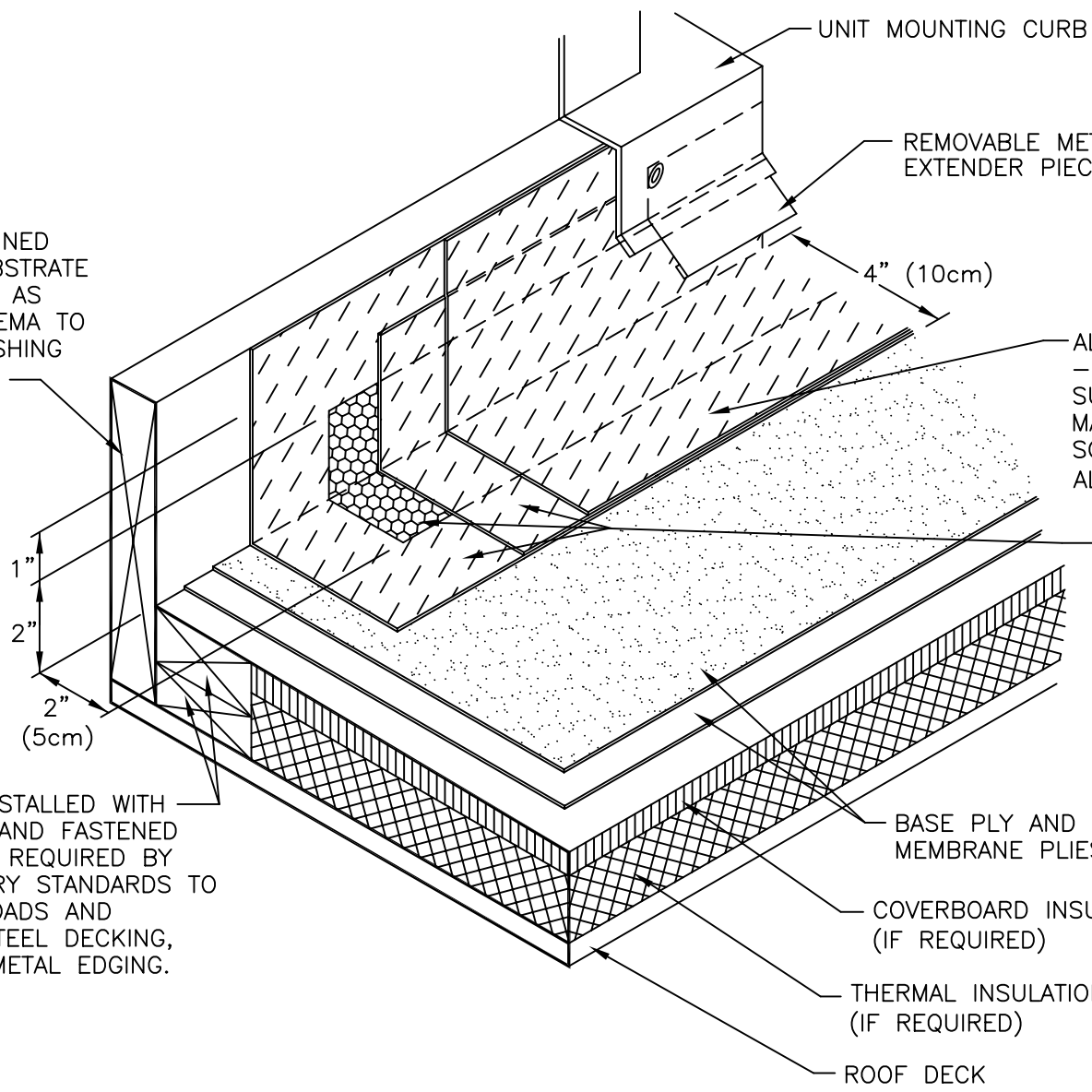


SUPPORTED/RESTRAINED WALL OR CURB SUBSTRATE SURFACE PREPARED AS REQUIRED BY SOPREMA TO RECEIVE ALSAN FLASHING MINIMUM 2" HEIGHT.



ALSAN FLASHING FINISH COAT - 30 MILS; OPTIONAL TOP SURFACING OF EMBEDDED MATCHING GRANULES OR SOPREMA CURAL ALUMINIZER-24 MILS (16 DRY)

ALSAN FLASHING BASE COAT WITH ALSAN PolyFleece REINFORCEMENT EMBEDDED INTO AND COVERED WITH BASE COAT WITHOUT WRINKLES OR FOLDS. TOTAL WET MIL THICKNESS-30 MILS AND APPROX. 22 DRY MILS (TYP).

WOOD NAILERS INSTALLED WITH BOND BREAKERS AND FASTENED AS SPECIFIED OR REQUIRED BY CODE OR INDUSTRY STANDARDS TO RESIST DESIGN LOADS AND CORROSION OF STEEL DECKING, FASTENERS AND METAL EDGING.

BASE PLY AND FIELD CAP MEMBRANE PLIES.


COVERBOARD INSULATION (IF REQUIRED)

THERMAL INSULATION (IF REQUIRED)

ROOF DECK

NOTES:

1. DETAIL TO BE USED IN CONJUNCTION WITH SOPREMA GENERAL REQUIREMENTS, APPROVED DETAILS AND ALSAN FLASHING (A.F.) APPLICATION AND COVERAGE DIRECTIONS.
2. CURAL 24 WET MIL COVERAGE RATE (DRY 16 MILS) IS 1.5 GALS/100FT<sup>2</sup> ALSAN FLASHING 30 WET MILS COVERAGE RATE (22 DRY MILS) IS 1.87 GALS/100FT<sup>2</sup> ALL COVERAGE RATES ARE APPROXIMATE, THEORETICAL AND DO NOT ACCOUNT FOR WASTE, SPILLAGE, IRREGULAR SURFACES AND APPLICATION TECHNIQUES THAT CAN ALSO VARY WITH INSTALLER. RATES MAY ALSO VARY DEPENDING UPON MATERIAL AND AMBIENT TEMPERATURE(S), SURFACE FINISH AND POROSITY OF THE SUBSTRATE.

|   |     |                       |               |
|---|-----|-----------------------|---------------|
|  |     | 310 QUADRAL DRIVE     |               |
|   |     | WADSWORTH, OHIO 44281 |               |
|   |     | (330) 334-0066        |               |
| TITLE   |     |                       |               |
| ALSAN FLASHING @ CURB   |     |                       |               |
| SCALE   | DWN | CHK                   | APPROVAL DATE |
| NONE  | DMT | PR                    | 5/1/05        |
| DRAWING NUMBER  |     |                       | REV           |
| AFC-001   |     |                       | 0             |

\*\* USAGE OF THIS DRAWING IS GOVERNED BY THE TERMS OF SERVICE FOR SOPREMA DETAIL. PLEASE CONSULT THESE TERMS OF SERVICE PRIOR TO UTILIZING THIS DRAWING.