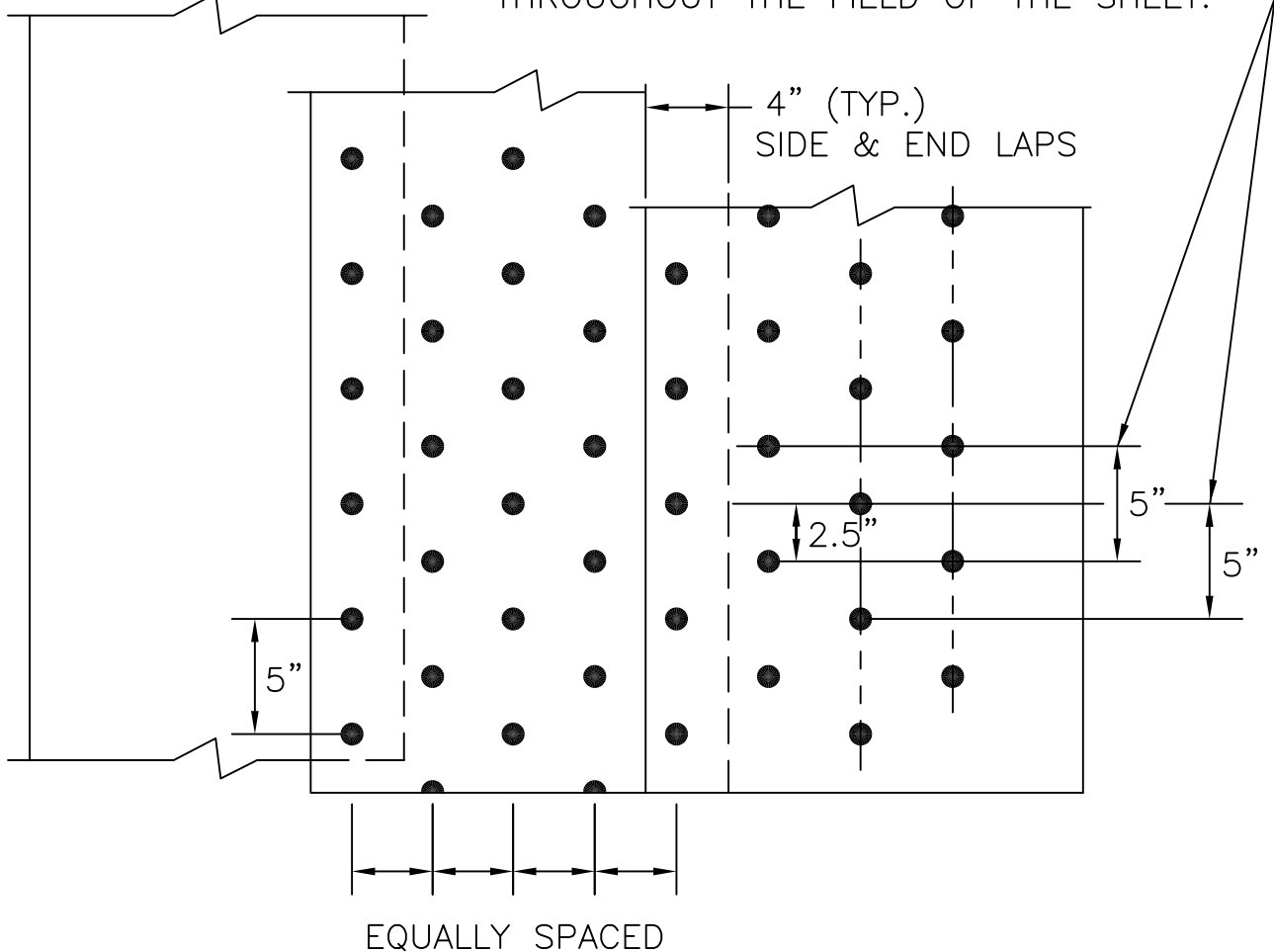


CONVERSIONS	
2.5" = 63mm	6.0" = 152mm
2.75" = 70mm	6.5" = 165mm
3.0" = 76mm	7.0" = 178mm
3.25" = 83mm	7.5" = 190mm
3.5" = 89mm	8.0" = 203mm
3.75" = 95mm	9.0" = 229mm
4.0" = 102mm	10.0" = 254mm
4.5" = 114mm	12" = 305mm
5.0" = 127mm	18" = 457mm
5.5" = 140mm	


FASTENERS @ THIS SPACING
EQUALLY DIVIDED AND STAGGERED
THROUGHOUT THE FIELD OF THE SHEET.



BASE SHEETS SHOULD
BE CUT INTO 12-15 FT.
LENGTHS AND LAPPED 4"
TO PREVENT EXCESSIVE
WRINKLING

NOTES:

1. DETAIL TO BE USED IN CONJUNCTION WITH SOPREMA GENERAL REQUIREMENTS, APPLICATION METHODS AND APPROVED DETAILS.
2. UNLESS OTHERWISE NOTED, FASTENER DENSITIES ARE DETERMINED EITHER BY PROJECT SPECIFICATION, DESIGN VELOCITY PRESSURES IN ACCORDANCE WITH CURRENT EDITION OF ASCE 7 OR AUTHORITY HAVING JURISDICTION (AHJ).
3. APPROXIMATELY 336 FASTENERS PER SQUARE. TOTALS MAY VARY DEPENDING UPON WIDTH OF SHEET USED AND SIDE LAP WIDTH.

		310 QUADRAL DRIVE	
		WADSWORTH, OHIO 44281	
		(330) 334-0066	
TITLE			
AHJ - 5/5/5/5			
SCALE	DWN	CHK	APPROVAL DATE
NONE	DMT	BS	6/12/06
DRAWING NUMBER			REV
BSFP-002			0

** USAGE OF THIS DRAWING IS GOVERNED BY THE TERMS OF SERVICE FOR SOPREMA DETAIL. PLEASE CONSULT THESE TERMS OF SERVICE PRIOR TO UTILIZING THIS DRAWING.