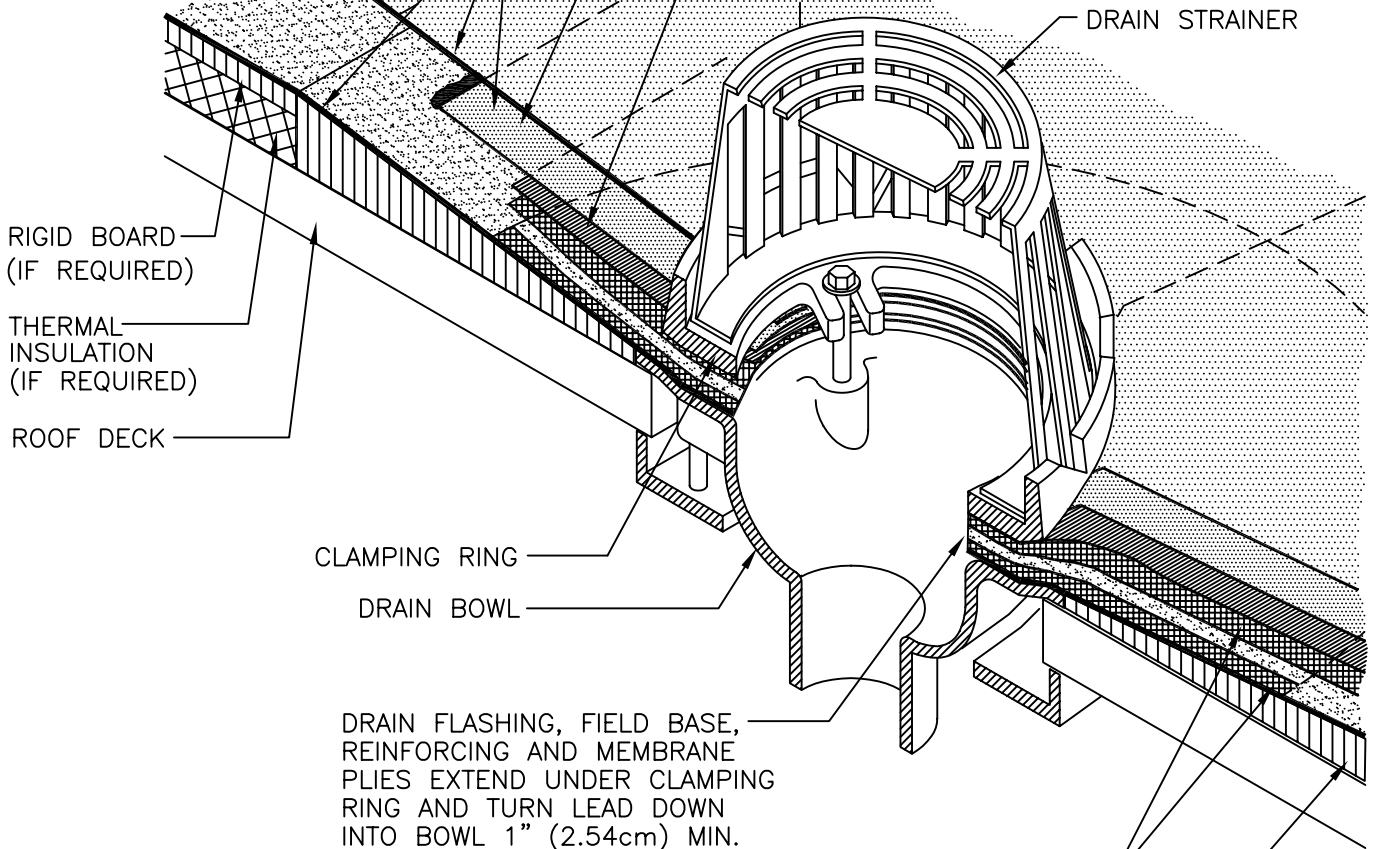


SOPREMA APPROVED SA PRIMER APPLIED TO ACCEPTABLE SUBSTRATE (WHERE REQUIRED), TO TOPSIDE OF BASE PLY AND REINFORCING PLY PRIOR TO SA CAP SHEET BEING INSTALLED.

COLSTIX™ FIELD BASE AND CAP MEMBRANE PLY ADHERED TO PROPERLY PREPARED OR PRIMED SUBSTRATES.

COLSTIX™ SOPRALENE STICK OR OTHER APPROVED REINFORCING MEMBRANE PLY—HEAT WELD OR HOT AIR WELD TO LEAD FLASHING. EXTEND 3" (7.6cm)

30" (76.2cm) SQUARE MINIMUM, 2 1/2 LB. TO 4 LB. (1.2kg TO 1.8kg) LEAD OR 16 OZ. (0.5kg) COPPER FLASHING SET IN BED OF SOPREMA MASTIC, PRIME TOP SURFACE WITH SOPREMA APPROVED SA PRIMER BEFORE INSTALLING REINFORCING PLY.



DRAIN FLASHING, FIELD BASE, REINFORCING AND MEMBRANE PLIES EXTEND UNDER CLAMPING RING AND TURN LEAD DOWN INTO BOWL 1" (2.54cm) MIN.

INSTALL A MINIMUM 8" (20cm) WIDE BED OF SOPREMA MASTIC ONTO THE DRAIN FLANGE AND OUT ONTO THE INSULATION PRIOR TO EMBEDDING THE FIELD BASE MEMBRANE PLY INTO THE MASTIC. AFTERWARD, APPLY ANOTHER BED OF MASTIC ON TOP OF THE BASE PLY PRIOR TO THE APPLICATION OF THE PRIMED DRAIN LEAD FLASHING.

WHEN POSSIBLE INSTALL MINIMUM 4' (10.2cm) DRAIN SUMP IN ANY ONE DIRECTION—OR THAT ADDITIONAL TAPER TO PROVIDE POSITIVE DRAINAGE.

NOTES:

1. USE IN CONJUNCTION WITH SOPREMA GENERAL REQUIREMENTS, COLSTIX PDS AND APPROVED DETAILS WHILE CONSTRUCTING OTHER ROOF COMPONENTS TO EXCEED CURRENT EDITION REQUIREMENTS OF FM APPROVALS, SMACNA, NRCA, ANSI/SPRI ES-1 AND FLORIDA BUILDING CODE—RAS NO. 111 WITH THE MOST STRINGENT REQUIREMENTS OR RECOMMENDATIONS PREVAILING.
2. SOPREMA ADHESIVES, CEMENTS, MASTICS, PRIMERS AND SEALANTS ARE REQUIRED WHERE INDICATED.
3. SEE DETAILS CXM-001, 002 & 003 FOR: WATERTIGHT SEAMS @ END LAPS; (T) JOINTS AND OTHER MEMBRANE CONNECTIONS; APPLYING SEAM SEALANT AT ALL FINISHED EDGES ON FIELD & FLASHING BASE PLIES.

		310 QUADRAL DRIVE WADSWORTH, OHIO 44281 (330) 334-0066	
TITLE COLSTIX™ DRAIN W/ CLAMPING RING			
SCALE	DWN DMT	CHK PR	APPROVAL DATE 10/15/04
DRAWING NUMBER CXDR-001			REV 0

** USAGE OF THIS DRAWING IS GOVERNED BY THE TERMS OF SERVICE FOR SOPREMA DETAIL. PLEASE CONSULT THESE TERMS OF SERVICE PRIOR TO UTILIZING THIS DRAWING.