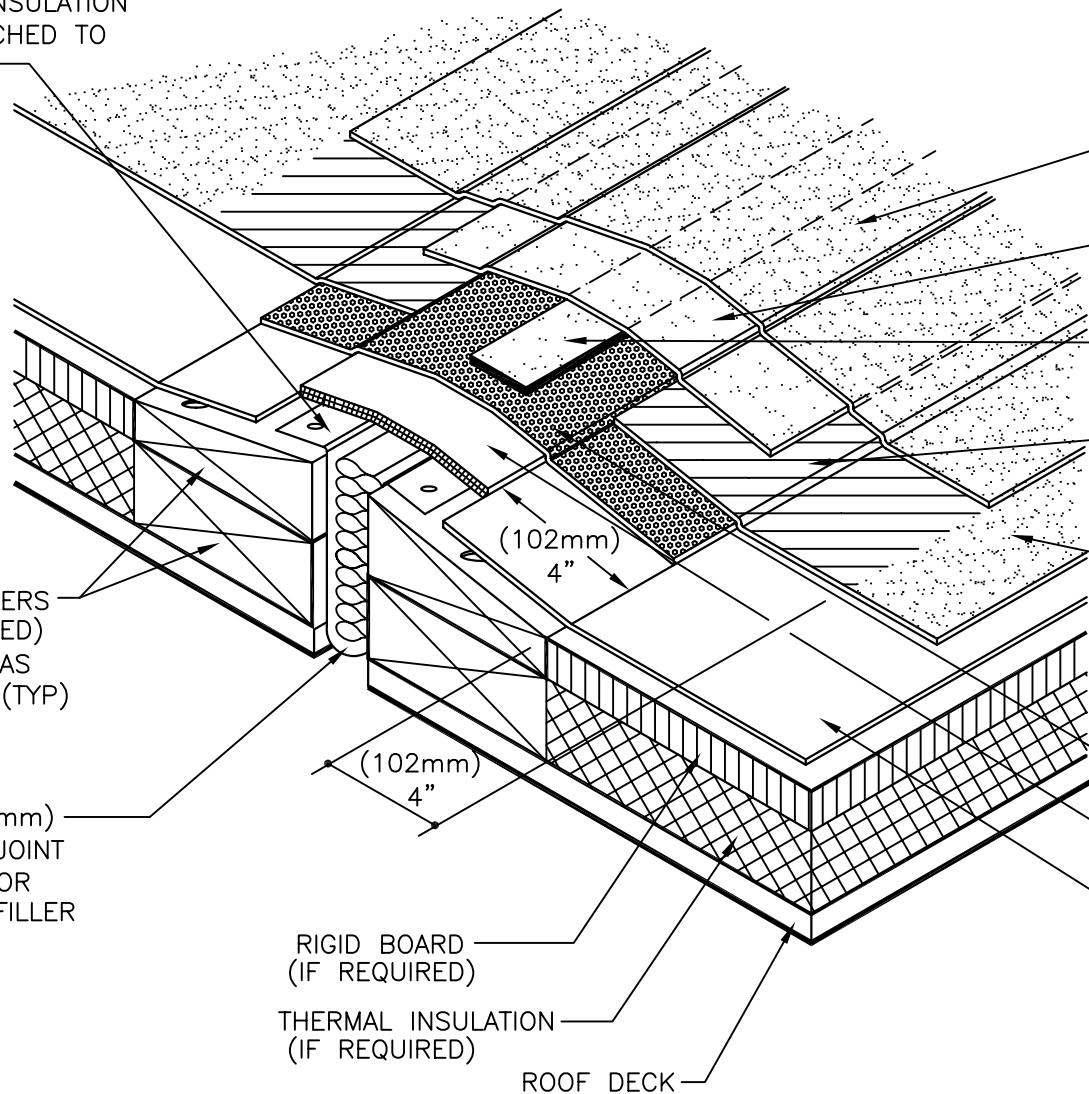


FLEXIBLE VAPOR RETARDER TO SERVE AS INSULATION RETAINER, ATTACHED TO WOOD NAILER



SOPRALENE EXPANSION FIELD CAP MEMBRANE PLY.

SOPRALENE FIRST PLY EXPANSION MEMBRANE EXTEND MIN 3" (76mm) ONTO FIELD CAP.

BOND BREAKER, 4" MIN (102mm)

WHEN USING OPEN FLAME DEVICES ON HEAT WELDED EXPANSION MEMBRANES EMBED GRANULES IN FLASHING AREA.

COLSTIX™ FIELD CAP MEMBRANE PLY HEAT OR HOT AIR WELD TO SOPRAJOINT. ADHERE REMAINING MEMBRANE TO PROPERLY PREPARED OR PRIMED SUBSTRATES.

SOPRAJOINT HEAT WELD OR HOT AIR WELD TO FIELD BASE MEMBRANE.

CUSHION AND SUPPORT SHEET FOR SOPRAJOINT.

COLSTIX™ FIELD BASE MEMBRANE PLY ADHERED TO PROPERLY PREPARED OR PRIMED SUBSTRATES.

WOOD NAILERS (IF REQUIRED) FASTENED AS SPECIFIED (TYP)

2" MAX (51mm) EXPANSION JOINT WITH FOAM OR ROCKWOOL FILLER

RIGID BOARD (IF REQUIRED)

THERMAL INSULATION (IF REQUIRED)

ROOF DECK

NOTES:

1. USE IN CONJUNCTION WITH SOPREMA GENERAL REQUIREMENTS, COLSTIX PDS AND APPROVED DETAILS WHILE CONSTRUCTING OTHER ROOF COMPONENTS TO EXCEED CURRENT EDITION REQUIREMENTS OF FM APPROVALS, SMACNA, NRCA, ANSI/SPRI ES 1-98 AND FLORIDA BUILDING CODE-RAS NO. 111 WITH THE MOST STRINGENT REQUIREMENTS OR RECOMMENDATIONS PREVAILING.
2. SOPREMA ADHESIVES, CEMENTS, MASTICS, PRIMERS AND SEALANTS ARE REQUIRED WHERE INDICATED.
3. SEE DETAILS CXM-001, 002 & 003 FOR: WATERTIGHT SEAMS @ END LAPS; (T) JOINTS AND OTHER MEMBRANE CONNECTIONS; APPLYING SEAM SEALANT AT ALL FINISHED EDGES ON FIELD & FLASHING BASE PLIES.



310 QUADRAL DRIVE
WADSWORTH, OHIO 44281
(330) 334-0066

TITLE				
COLSTIX™ RAISED CONTROL JOINT DETAIL				
SCALE	DWN	CHK	APPROVAL DATE	
NONE	DMT	PR	6/15/03	
DRAWING NUMBER				REV
CXEJ-003				0

** USAGE OF THIS DRAWING IS GOVERNED BY THE TERMS OF SERVICE FOR SOPREMA DETAIL. PLEASE CONSULT THESE TERMS OF SERVICE PRIOR TO UTILIZING THIS DRAWING.