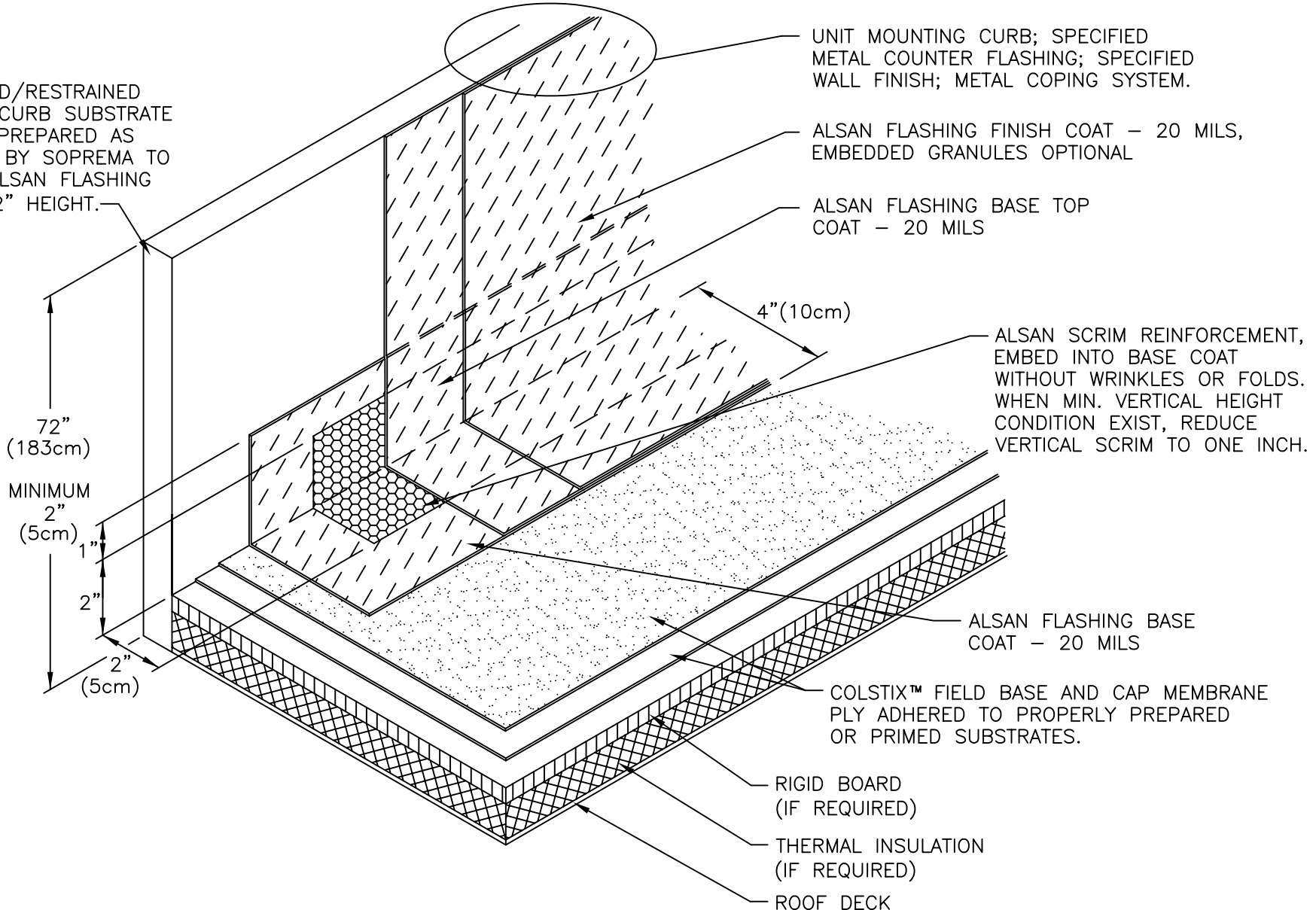


SUPPORTED/RESTRAINED WALL OR CURB SUBSTRATE SURFACE PREPARED AS REQUIRED BY SOPREMA TO RECEIVE ALSAN FLASHING MINIMUM 2" HEIGHT.



UNIT MOUNTING CURB; SPECIFIED METAL COUNTER FLASHING; SPECIFIED WALL FINISH; METAL COPING SYSTEM.

ALSAN FLASHING FINISH COAT - 20 MILS, EMBEDDED GRANULES OPTIONAL

ALSAN FLASHING BASE TOP COAT - 20 MILS

ALSAN SCRIM REINFORCEMENT, EMBED INTO BASE COAT WITHOUT WRINKLES OR FOLDS. WHEN MIN. VERTICAL HEIGHT CONDITION EXIST, REDUCE VERTICAL SCRIM TO ONE INCH.

ALSAN FLASHING BASE COAT - 20 MILS

COLSTIX™ FIELD BASE AND CAP MEMBRANE PLY ADHERED TO PROPERLY PREPARED OR PRIMED SUBSTRATES.

RIGID BOARD (IF REQUIRED)

THERMAL INSULATION (IF REQUIRED)

ROOF DECK

NOTES:

1. DETAIL TO BE USED IN CONJUNCTION WITH SOPREMA GENERAL REQUIREMENTS, COLSTIX PDS, APPROVED DETAILS AND ALSAN FLASHING (A.F.) APPLICATION AND COVERAGE DIRECTIONS.
2. A 20 MILS AF COATING HAS AN APPROXIMATE COVERAGE RATE OF 1.25 GALS/100 FT.² ALL COVERAGE RATES ARE APPROXIMATE, THEORETICAL AND DO NOT ACCOUNT FOR WASTE, SPILLAGE, IRREGULAR SURFACES AND APPLICATION TECHNIQUES THAT CAN ALSO VARY WITH INSTALLER. RATES MAY ALSO VARY DEPENDING UPON MATERIAL AND AMBIENT TEMPERATURE(S), SURFACE FINISH AND POROSITY OF THE SUBSTRATE.
3. SEE DETAILS CXM-001, 002 & 003 FOR: WATERTIGHT SEAMS @ END LAPS; (T) JOINTS AND OTHER MEMBRANE CONNECTIONS; APPLYING SEAM SEALANT AT ALL FINISHED EDGES ON FIELD & FLASHING BASE PLIES.



310 QUADRAL DRIVE
WADSWORTH, OHIO 44281
(330) 334-0066

TITLE COLSTIX™ ALSAN FLASHING HIGH WALL			
SCALE NONE	DWN DMT	CHK PR	APPROVAL DATE 10/15/04
DRAWING NUMBER CXWBF-002			REV 0

** USAGE OF THIS DRAWING IS GOVERNED BY THE TERMS OF SERVICE FOR SOPREMA DETAIL. PLEASE CONSULT THESE TERMS OF SERVICE PRIOR TO UTILIZING THIS DRAWING.