

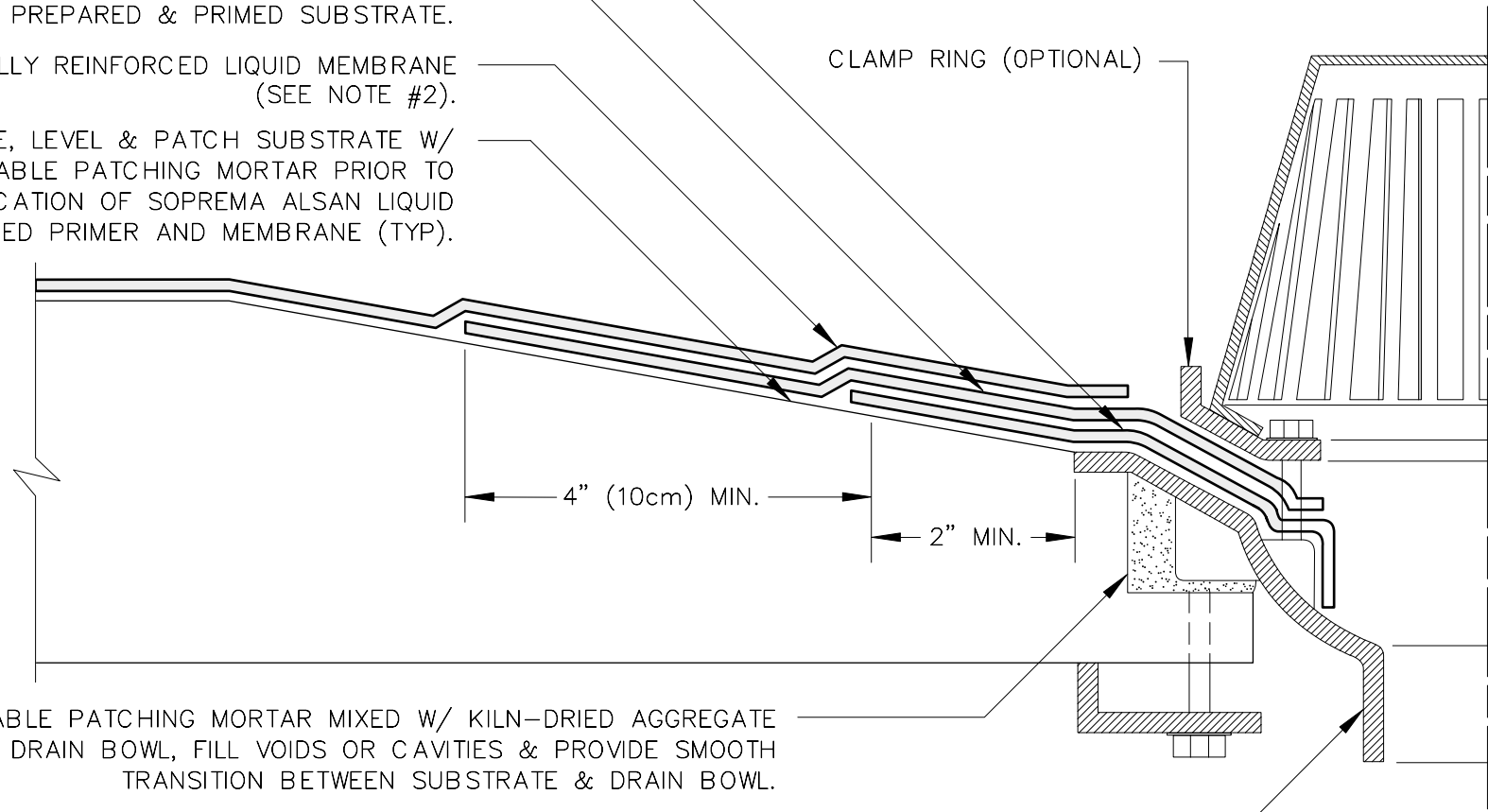
ALSAN LIQUID MEMBRANE FINGER FLASHING
EXTENDED 4" (10cm) MIN. INTO PREPARED
AND CLEANED DRAIN BOWL.

ALSAN LIQUID MEMBRANE TARGET FLASHING
EXTEND FROM EDGE OF DRAIN BOWL ONTO
PREPARED & PRIMED SUBSTRATE.

ALSAN FULLY REINFORCED LIQUID MEMBRANE
(SEE NOTE #2).

PREPARE, LEVEL & PATCH SUBSTRATE W/
ACCEPTABLE PATCHING MORTAR PRIOR TO
APPLICATION OF SOPREMA ALSAN LIQUID
APPLIED PRIMER AND MEMBRANE (TYP).

CLAMP RING (OPTIONAL)




ACCEPTABLE PATCHING MORTAR MIXED W/ KILN-DRIED AGGREGATE
TO SET DRAIN BOWL, FILL VOIDS OR CAVITIES & PROVIDE SMOOTH
TRANSITION BETWEEN SUBSTRATE & DRAIN BOWL.

ACCEPTABLE ROOF DRAIN ASSEMBLY PREPARE & PRIME DRAIN
BOWL AS REQ'D FOR ALSAN LIQUID MEMBRANE APPLICATION.

NOTES:

1. DETAIL TO BE USED IN CONJUNCTION WITH SOPREMA GENERAL REQUIREMENTS, APPLICATION METHODS AND APPROVED DETAILS.
2. A FULLY REINFORCED LIQUID MEMBRANE SYSTEM IS DEFINED AS AN ASSEMBLY CONSISTING OF TWO LIQUID RESIN APPLICATIONS & FABRIC REINFORCEMENT INSTALLED BETWEEN THE RESIN LAYERS. REFER TO DETAIL A-1 FOR ADDITIONAL INFORMATION.

		310 QUADRAL DRIVE WADSWORTH, OHIO 44281 (330) 334-0066					
		TITLE: ROOF DRAIN FLASHING					
SCALE	NONE	DWN	PBF	CHK	BS	APPROVAL DATE	4/30/09
DRAWING NUMBER	D-1					REV	0

** USAGE OF THIS DRAWING IS GOVERNED BY THE TERMS OF SERVICE FOR SOPREMA DETAIL. PLEASE CONSULT THESE TERMS OF SERVICE PRIOR TO UTILIZING THIS DRAWING.