

ALSAN LIQUID MEMBRANE FINGER FLASHING  
EXTENDED 4" (10cm) MIN. INTO PREPARED  
AND CLEANED DRAIN BOWL.

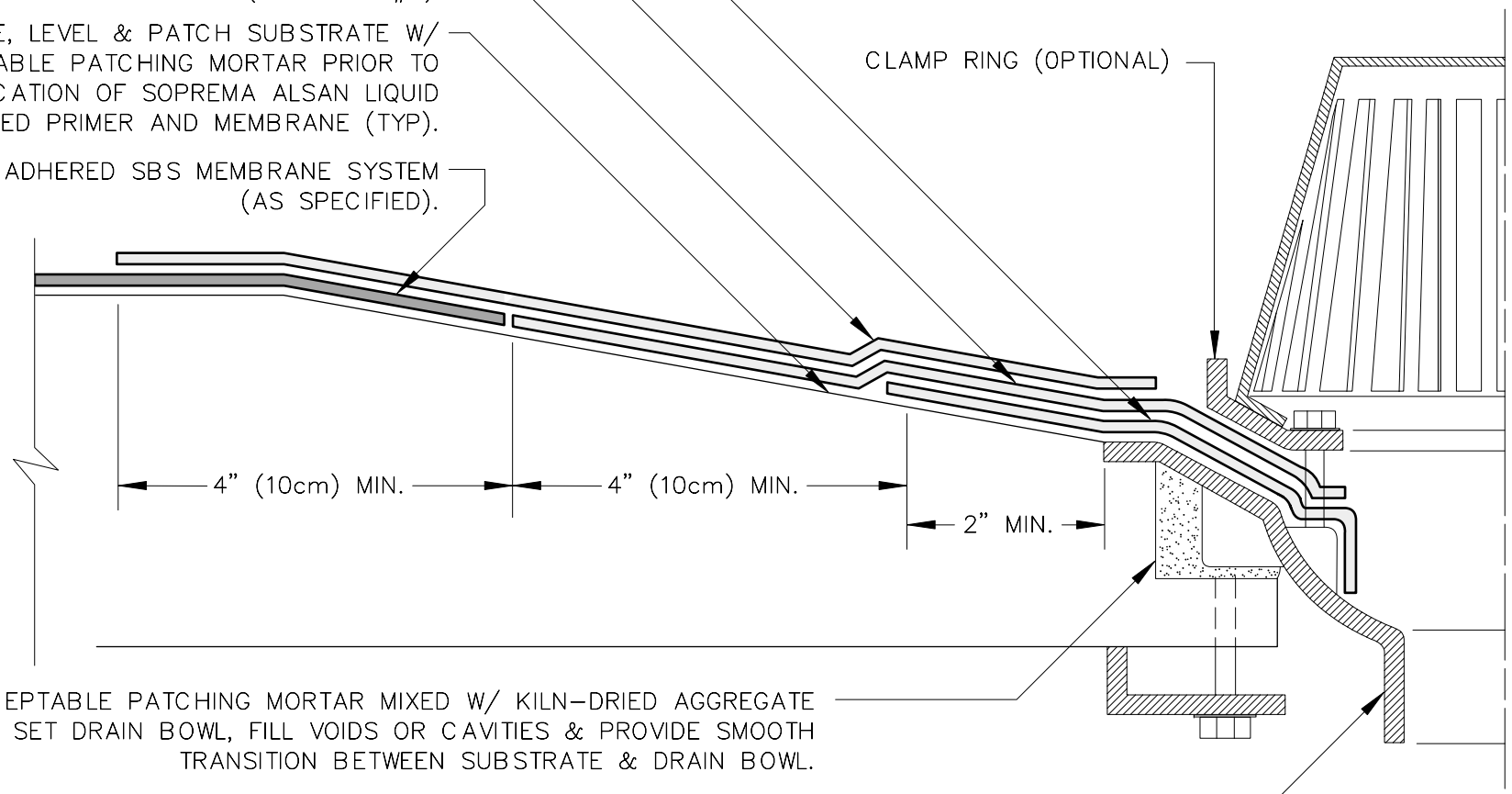
ALSAN LIQUID MEMBRANE TARGET FLASHING  
EXTEND FROM EDGE OF DRAIN BOWL ONTO  
PREPARED & PRIMED SUBSTRATE.

ALSAN FULLY REINFORCED LIQUID  
MEMBRANE (SEE NOTE #2).

PREPARE, LEVEL & PATCH SUBSTRATE W/  
ACCEPTABLE PATCHING MORTAR PRIOR TO  
APPLICATION OF SOPREMA ALSAN LIQUID  
APPLIED PRIMER AND MEMBRANE (TYP).

FULLY ADHERED SBS MEMBRANE SYSTEM  
(AS SPECIFIED).

CLAMP RING (OPTIONAL)




ACCEPTABLE PATCHING MORTAR MIXED W/ KILN-DRIED AGGREGATE  
TO SET DRAIN BOWL, FILL VOIDS OR CAVITIES & PROVIDE SMOOTH  
TRANSITION BETWEEN SUBSTRATE & DRAIN BOWL.

ACCEPTABLE ROOF DRAIN ASSEMBLY PREPARE & PRIME DRAIN  
BOWL AS REQ'D FOR ALSAN LIQUID MEMBRANE APPLICATION.

NOTES:

1. DETAIL TO BE USED IN CONJUNCTION WITH SOPREMA GENERAL REQUIREMENTS, APPLICATION METHODS AND APPROVED DETAILS.
2. A FULLY REINFORCED LIQUID MEMBRANE SYSTEM IS DEFINED AS AN ASSEMBLY CONSISTING OF TWO LIQUID RESIN APPLICATIONS & FABRIC REINFORCEMENT INSTALLED BETWEEN THE RESIN LAYERS. REFER TO DETAIL A-1 FOR ADDITIONAL INFORMATION.

		310 QUADRAL DRIVE	
		WADSWORTH, OHIO 44281 (330) 334-0066	
TITLE ROOF DRAIN FLASHING INCORPORATED W/MOD BIT			
SCALE NONE	DWN PBF	CHK KD	APPROVAL DATE 11/11/10
DRAWING NUMBER D-1aM			REV 0

\*\* USAGE OF THIS DRAWING IS GOVERNED BY THE TERMS OF SERVICE FOR SOPREMA DETAIL. PLEASE CONSULT THESE TERMS OF SERVICE PRIOR TO UTILIZING THIS DRAWING.