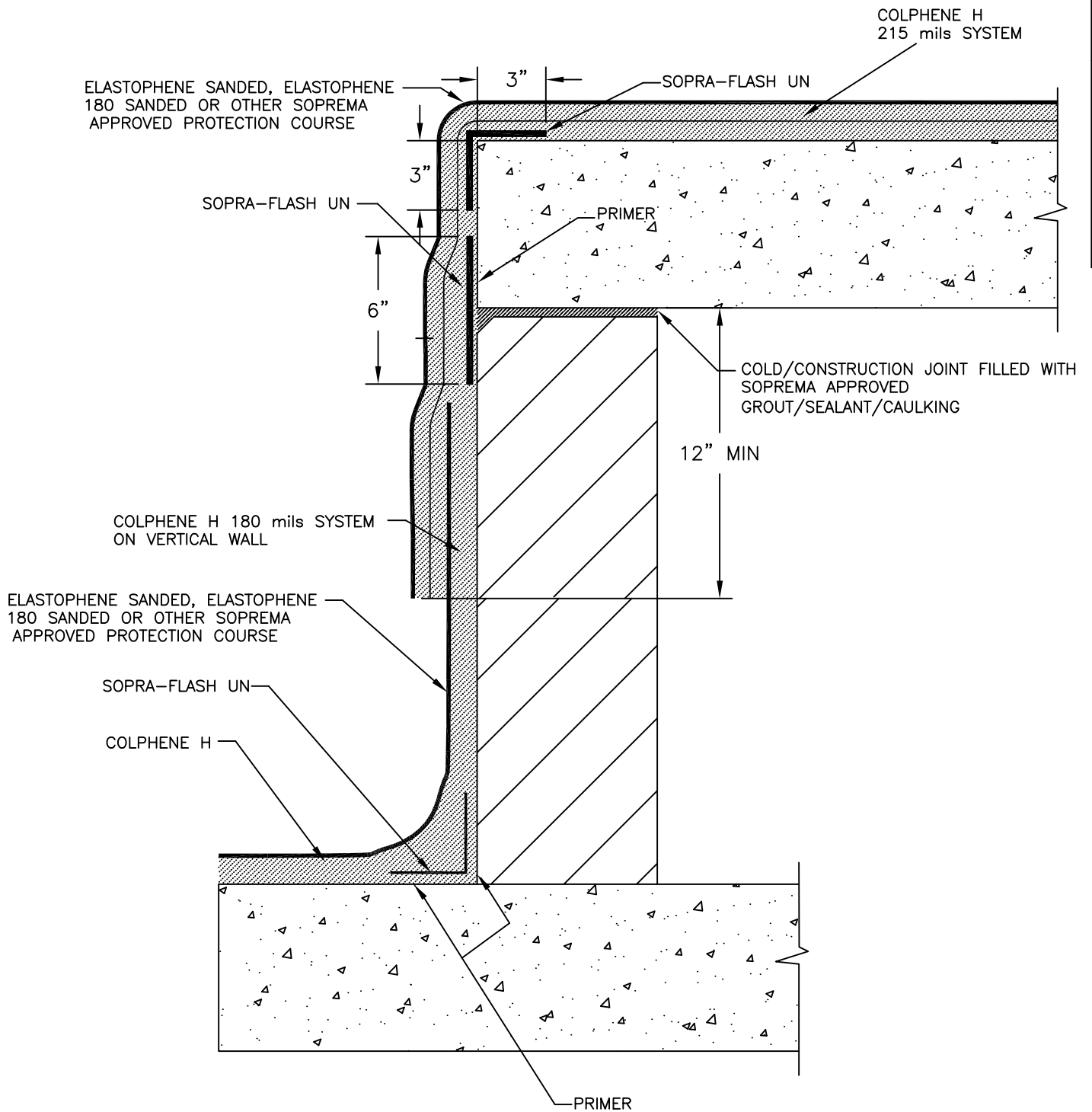



DRAINBOARD AND/OR INSULATION NOT SHOWN FOR CLARITY



NOTES:

1. DETAIL TO BE USED IN CONJUNCTION WITH SOPREMA GENERAL REQUIREMENTS, APPLICATION METHODS AND APPROVED DETAILS.
2. ELASTOPHENE 180 SANDED IF USED DOES NOT REQUIRE AN ADDITIONAL PROTECTION COURSE CALL SOPREMA FOR DETAILS

		310 QUADRAL DRIVE	
		WADSWORTH, OHIO 44281	
		(330) 334-0066	
TITLE			
FOUNDATION WALL 180 MILS SYSTEM			
SCALE	DWN	CHK	APPROVAL DATE
NONE	TM	JP	12/22/09
DRAWING NUMBER			REV
HRW-602B			0

\*\* USAGE OF THIS DRAWING IS GOVERNED BY THE TERMS OF SERVICE FOR SOPREMA DETAIL. PLEASE CONSULT THESE TERMS OF SERVICE PRIOR TO UTILIZING THIS DRAWING.