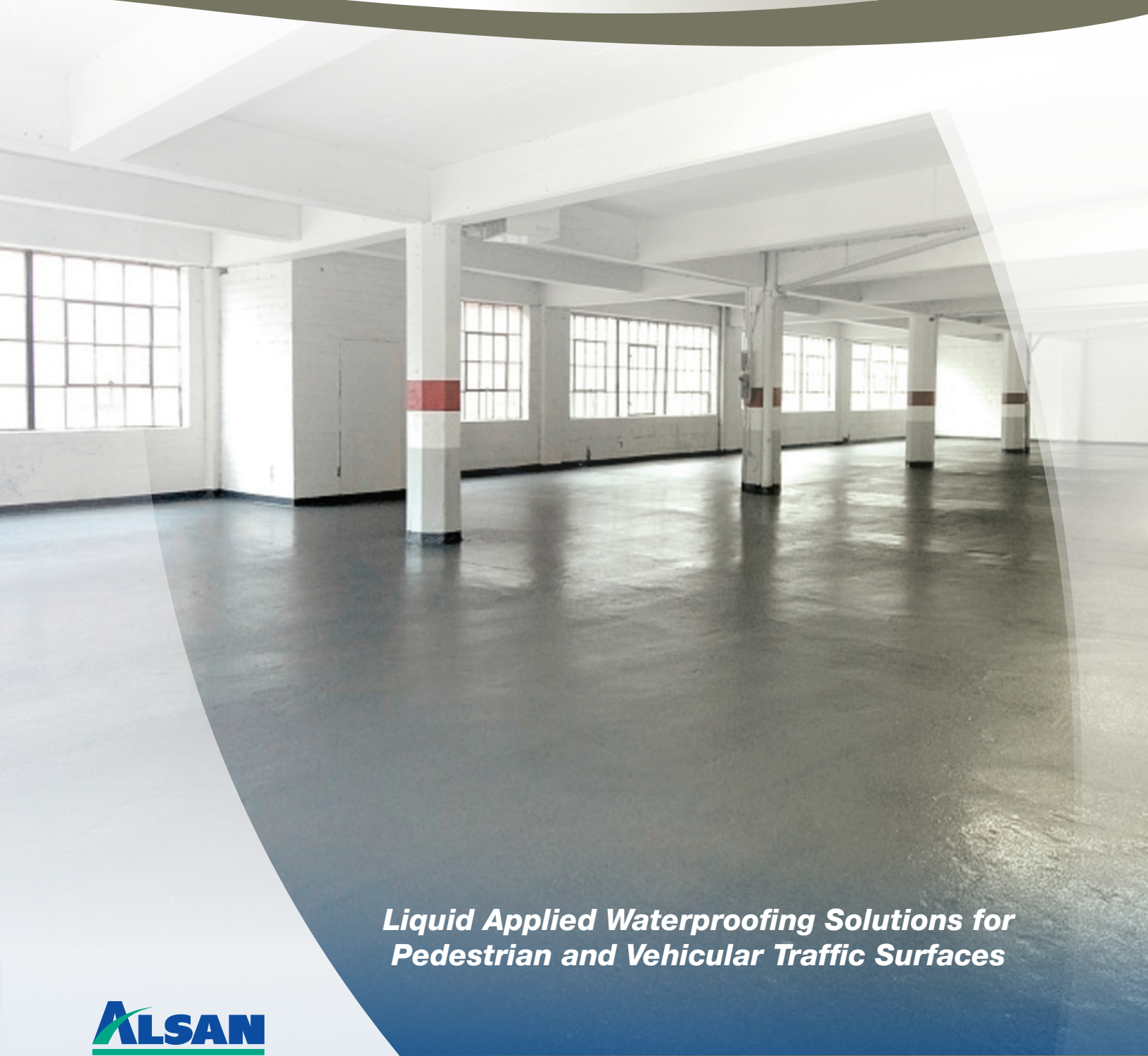


TRAFIK HP 500

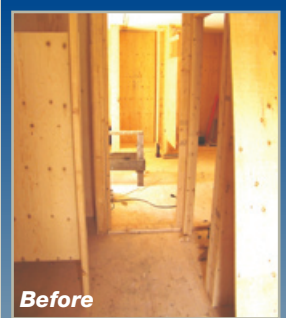


*Liquid Applied Waterproofing Solutions for
Pedestrian and Vehicular Traffic Surfaces*



Why Alsan Trafik HP 500?

TRAFIK HP 500 is an extremely durable, and cost effective, liquid waterproofing system. Part of SOPREMA's ALSAN line of polyurethane waterproofing products, the TRAFIK HP 500 system consists of a NO VOC primer coat and three single component polyurethane coats. Due to its superior elongation properties and high abrasive resistance, the TRAFIK HP 500 system waterproofs and protects concrete structures from residential balconies to heavy traffic commercial parking structures.



Before



After



Alsan Trafik HP 500 Advantages

Highly Resistant

The TRAFIK HP 500 system resists punctures, wear, temperature variations and UV rays by providing optimal protection, even in high traffic areas.

Light-Weight, Heavy-Duty System

The TRAFIK HP 500 system, weighing only 0.41 lb/ft² (2 kg/m²), is a light weight, heavy duty system that does not need to be recovered by concrete or asphalt, offering the maximum height in parking structures.

Reduced Risk of Water Infiltration

The TRAFIK HP 500 system is the perfect solution for waterproofing upstands and complex details. This liquid waterproofing technology provides a smooth, seamless membrane that reduces the risk of any water infiltration.

Worry Free Application

TRAFIK HP 500 products are single component, polyurethane waterproofing products that do not require on site mixing, providing efficient installation and reducing the risk of curing issues.

Excellent Chemical Resistance

The Trafik HP 500 system has been tested in laboratory conditions using ASTM 1308 D and has received "excellent"(retains properties) ratings for:

Oxygenated Gasoline • Hydraulic Fluid • Motor Oil • De-Icer • Oils and Fats
Aviation Fuel • Diesel Fuel • Antifreeze • Acid Rain • Sea Water



Before



After

Alsan Trafik HP 500 System Components

TRAFIK HP 510 ZERO

Single component polyurethane primer promotes the adhesion of the TRAFIK HP system to the substrate.

TRAFIK HP 520

Single component, ready to use, polyurethane waterproofing application. Color: Light Grey

TRAFIK HP 530

Single component, ready to use, polyurethane wear coat that ensures the durability of the TRAFIK HP 500 system.

TRAFIK HP 540

Single component, ready to use, polyurethane finish coat. Provides the TRAFIK HP 500 system with greater durability and facilitates easy cleanup.

Product Spotlight: **TRAFIK HP** 510 ZERO

SOPREMA stands alone with its innovative line of polyurethane products. TRAFIK 510 ZERO is a high performance primer which meets and surpasses the volatile organic compound (VOC) standards set by the United States Environmental Protection Agency (EPA).

SOPREMA is the first manufacturer to develop a polyurethane single component primer with NO volatile organic compounds (VOC).



The Alsan Trafik HP 500 Systems

SOPREMA offers three TRAFIK HP 500 systems designed for varying traffic types and intensities. To select the most appropriate system for your project, contact a SOPREMA technical representative at 1.800.356.3521.

Pedestrian Traffic

For pedestrian traffic areas such as mechanical rooms, balconies and plaza decks: these surfaces allow for a lighter solution, requiring fewer coats.

- 1: TRAFIK HP 510 ZERO Primer**
- 2: TRAFIK HP 520 Membrane**
- 3: TRAFIK HP 530 Wear coat and aggregate**



Light Duty Vehicular Traffic

For light duty vehicular traffic areas such as multilevel parking garages, SOPREMA recommends an intermediary system to waterproof pedestrian and parking stalls.

- 1: TRAFIK HP 510 ZERO Primer**
- 2: TRAFIK HP 520 Membrane**
- 3: TRAFIK HP 530 Wear coat and aggregate**
- 4: TRAFIK HP 540 Finish Coat**



Heavy Duty Vehicular Traffic

For heavy duty vehicular traffic areas such as turning radii, ramps and paying turnstiles in multilevel parking decks, SOPREMA recommends the heavy duty system.

- 1: TRAFIK HP 510 ZERO Primer**
- 2: TRAFIK HP 520 Membrane**
- 3: Two coats of TRAFIK HP 530 and aggregate**
- 4: TRAFIK HP 540 Finish Coat**

