

Unilay

Mechanically Fastened Single Ply



*The Building
Envelope
Company*



Description

UNILAY membrane is composed of selected SBS modified bitumen applied onto a non-woven polyester reinforcement with a plastic burn-off on the underside and granulated topside.

Substrate

- Cementitious Wood Fiber Decks
- Concrete Decks
- Gypsum Decks
- Plywood Decks
- Steel Decks
- Wood Decks
- Wood Composite Decks

Advantages

- Economical, labor-saving installation
- Increased life expectancy when compared to torched APP membrane with a coating
- Quick and easy solution for recover applications
- Loose laid then In-Lap mechanically fastened over existing roof membrane
- Increased puncture and tear resistance
- Increased elongation capabilities and strain energy results
- Meets ASTM 5849-95 (Reapproved 2000) Standard Test Method for evaluating resistance of modified bituminous roofing membranes to cyclic joint displacement, test condition no. 5
- UL Classified membrane and Approved Class A roof construction
- See current listings at Underwriters Laboratories, Inc. File #R11436; FM approvals; ICC/ES and Miami-Dade County product approval; ISO-9002 for approved roof assembly combinations
- Included in Soprema Project Warranty agreement offerings

Installation Instructions

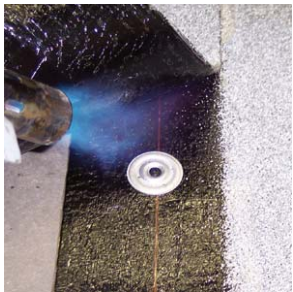
Step A

Approved decks, substrates, surfaces or existing roof assembly (when applicable) must be dry and properly prepared which includes free of dirt, dust, debris, oils, loose and/or embedded gravel, deteriorated existing membrane separated with base sheet or Sopraboard being used as a leveling agent.



Step B

Soprafix, Soprafix (X) or Soprafix E are used as the platform membrane (depending upon warranty, FM approvals and International Building Code Approvals required) at all roof perimeters, curbs and other penetrations. These membranes are mechanically fastened In-Lap with heat sealed or self adhesive laps following Soprafix approved details and application methods. In the areas where platform membranes are required, the Unilay membrane is heat welded onto the platform membrane to form a two-ply SBS membrane roof assembly.



Step C

In the field of the roof, Unilay membrane is mechanically fastened only in the five (5) inch wide side lap with heat sealed laps using Soprema supplied fasteners and seam plates. At all roof perimeters, curbs and other penetrations, Unilay is heat welded onto the mechanically fastened Soprafix "platform membrane" as noted in Step B.

*See Current Product Technical Data Sheet and MSDS for more information

