

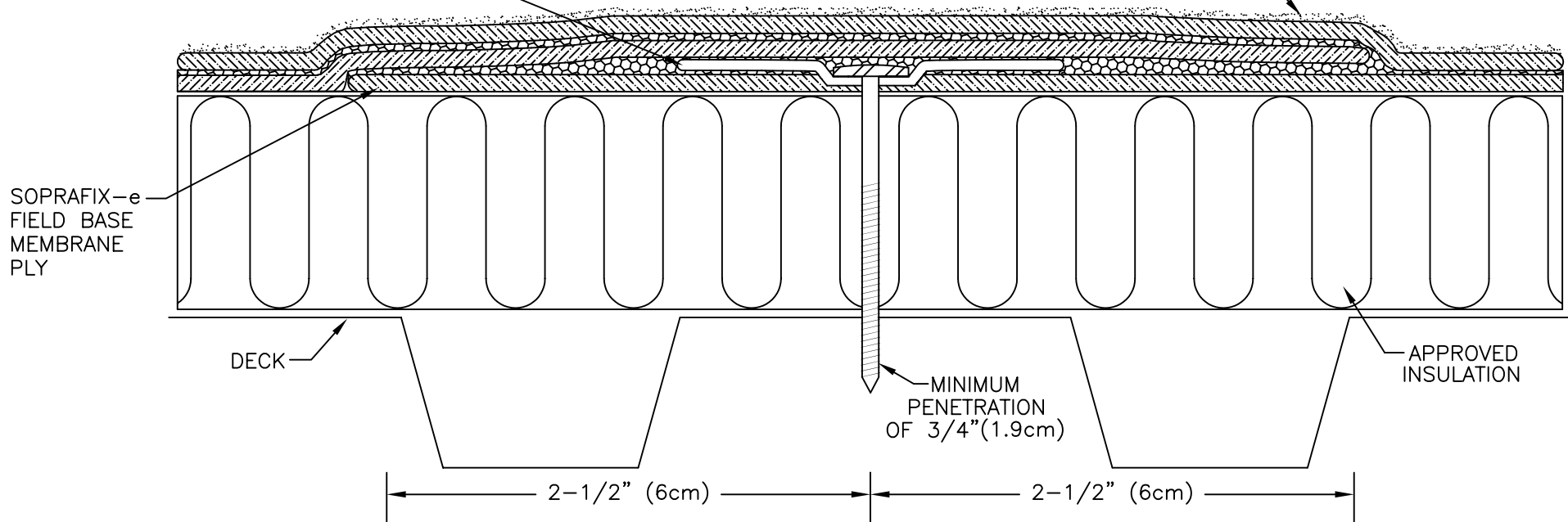
* LAP SEAM MUST BE ROLLED WITH APPROVED ROLLER.

←MINIMUM 5" (13cm) SELF-ADHESIVE SIDE LAP IS ADHERED AROUND MEMBRANE PLATE.→
 IN COOL WEATHER, SIDE LAP IS EITHER HOT AIR WELDED OR SEAM IS SEALED USING AN OPEN FLAME HEATING DEVICE. CONTRACTOR MUST DETERMINE WHICH SOPREMA APPLICATION METHOD NECESSARY TO PRODUCE WATERTIGHT SEAMS DURING ACCEPTABLE ROOFING WEATHER CONDITIONS.

←12" (30.5cm) MINIMUM LAP OFFSET FROM CAP MEMBRANE TO BASE MEMBRANE SIDE & END LAPS→

CENTER #14 OR #15 FASTENER OR OTHER APPROVED FASTENER W/ SOPRAPHIX 2" PLATE IN SIDELAP SEAM. SEE CURRENT SOPRAPHIX PDS FOR INSTALLATION PROCEDURES.


COLSTIX™ SERIES FIELD CAP MEMBRANE PLY OR OTHER SOPREMA SBS HEAT WELDED, HOT MOPPED OR COLD APPLIED CAP SHEET—SEE NOTE 1.



SOPRAPHIX-e FIELD BASE MEMBRANE PLY LAYOUT
SEE FASTENING PATTERN DETAILS: SFMA-013 & SFMA-014

NOTES:

1. DETAIL TO BE USED IN CONJUNCTION WITH SOPREMA GENERAL REQUIREMENTS AND APPROVED DETAILS FOR FM APPROVALS (FMG) APPROVED STEEL & CONCRETE DECKS. **SEE FMG AND ICC/ES LISTINGS FOR APPROVED CONSTRUCTIONS.**
2. FOR WIND RIDERS GREATER THAN 63 MPH @ 3-SEC GUST: ROOFING CONTRACTOR IS RESPONSIBLE TO OBTAIN FROM SOPREMA'S CORPORATE TECHNICAL DEPARTMENT PRIOR TO BIDDING OR JOB-START, APPROVED FASTENING PATTERNS (FASTENER WITHDRAWAL VALUES CAN CHANGE ACTUAL FASTENER SPACING APPROVED) AND THE NUMBER OF REQUIRED PERIMETER ROLLS. IF APPROVAL IS NOT OBTAINED PRIOR TO INSTALLATION, THE COST OF INSTALLING ADDITIONAL FASTENERS WILL BE BORNE BY THE RESPONSIBLE PARTY.
3. FMG PERIMETER DEFINITION: X=4/10 OF BUILDING HEIGHT OR 1/10 THE BUILDING WIDTH, WHICHEVER IS THE LESSER DIMENSION. SOPREMA REQUIRES A MINIMUM OF 3 PERIMETER ROLLS. THE NUMBER OF PERIMETER ROLLS AND **FASTENER DENSITIES MAY INCREASE WHEN WIND WARRANTY RIDERS ARE APPROVED.**
4. SOPRAPHIX 2-3/8" PLATE CAN BE SUBSTITUTED FOR THE SOPRAPHIX 2" PLATE.

		310 QUADRAL DRIVE WADSWORTH, OHIO 44281 (330) 334-0066		
		TITLE Soprafix-e FMG 1-90 w/ 2" Plate & 5" Lap		
SCALE	NONE	DWN DMT	CHK BS	APPROVAL DATE 11/17/06
DRAWING NUMBER			SFMA-012	REV 0

** USAGE OF THIS DRAWING IS GOVERNED BY THE TERMS OF SERVICE FOR SOPREMA DETAIL. PLEASE CONSULT THESE TERMS OF SERVICE PRIOR TO UTILIZING THIS DRAWING.