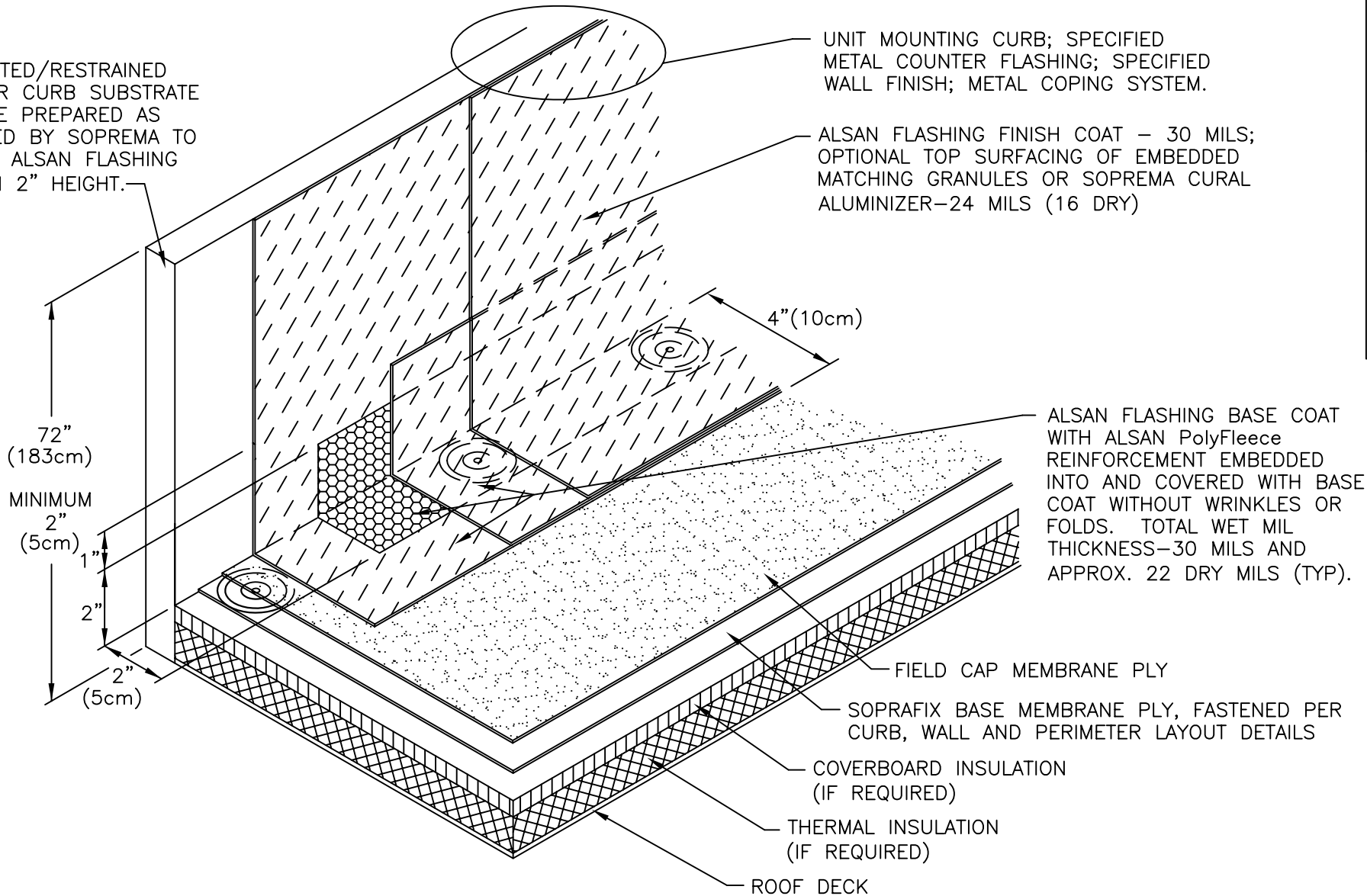


SUPPORTED/RESTRAINED WALL OR CURB SUBSTRATE SURFACE PREPARED AS REQUIRED BY SOPREMA TO RECEIVE ALSAN FLASHING MINIMUM 2" HEIGHT.



UNIT MOUNTING CURB; SPECIFIED METAL COUNTER FLASHING; SPECIFIED WALL FINISH; METAL COPING SYSTEM.

ALSAN FLASHING FINISH COAT - 30 MILS; OPTIONAL TOP SURFACING OF EMBEDDED MATCHING GRANULES OR SOPREMA CURAL ALUMINIZER-24 MILS (16 DRY)

ALSAN FLASHING BASE COAT WITH ALSAN PolyFleece REINFORCEMENT EMBEDDED INTO AND COVERED WITH BASE COAT WITHOUT WRINKLES OR FOLDS. TOTAL WET MIL THICKNESS-30 MILS AND APPROX. 22 DRY MILS (TYP).

FIELD CAP MEMBRANE PLY

SOPRAFIX BASE MEMBRANE PLY, FASTENED PER CURB, WALL AND PERIMETER LAYOUT DETAILS

COVERBOARD INSULATION (IF REQUIRED)

THERMAL INSULATION (IF REQUIRED)

ROOF DECK

NOTES:

1. DETAIL TO BE USED IN CONJUNCTION WITH SOPREMA GENERAL REQUIREMENTS, APPROVED DETAILS AND ALSAN FLASHING (A.F.) APPLICATION AND COVERAGE DIRECTIONS.
2. CURAL 24 WET MIL COVERAGE RATE (DRY 16 MILS) IS 1.5 GALS/100FT² ALSAN FLASHING 30 WET MILS COVERAGE RATE (22 DRY MILS) IS 1.87 GALS/100FT² ALL COVERAGE RATES ARE APPROXIMATE, THEORETICAL AND DO NOT ACCOUNT FOR WASTE, SPILLAGE, IRREGULAR SURFACES AND APPLICATION TECHNIQUES THAT CAN ALSO VARY WITH INSTALLER. RATES MAY ALSO VARY DEPENDING UPON MATERIAL AND AMBIENT TEMPERATURE(S), SURFACE FINISH AND POROSITY OF THE SUBSTRATE.



310 QUADRAL DRIVE
WADSWORTH, OHIO 44281
(330) 334-0066

TITLE				SOPRAFIX HIGH WALL W/ ALSAN FLASHING	
SCALE	DWN	CHK	APPROVAL DATE		
NONE	DMT	PR	10/15/04		
DRAWING NUMBER					REV
SFWBF-005					0

** USAGE OF THIS DRAWING IS GOVERNED BY THE TERMS OF SERVICE FOR SOPREMA DETAIL. PLEASE CONSULT THESE TERMS OF SERVICE PRIOR TO UTILIZING THIS DRAWING.