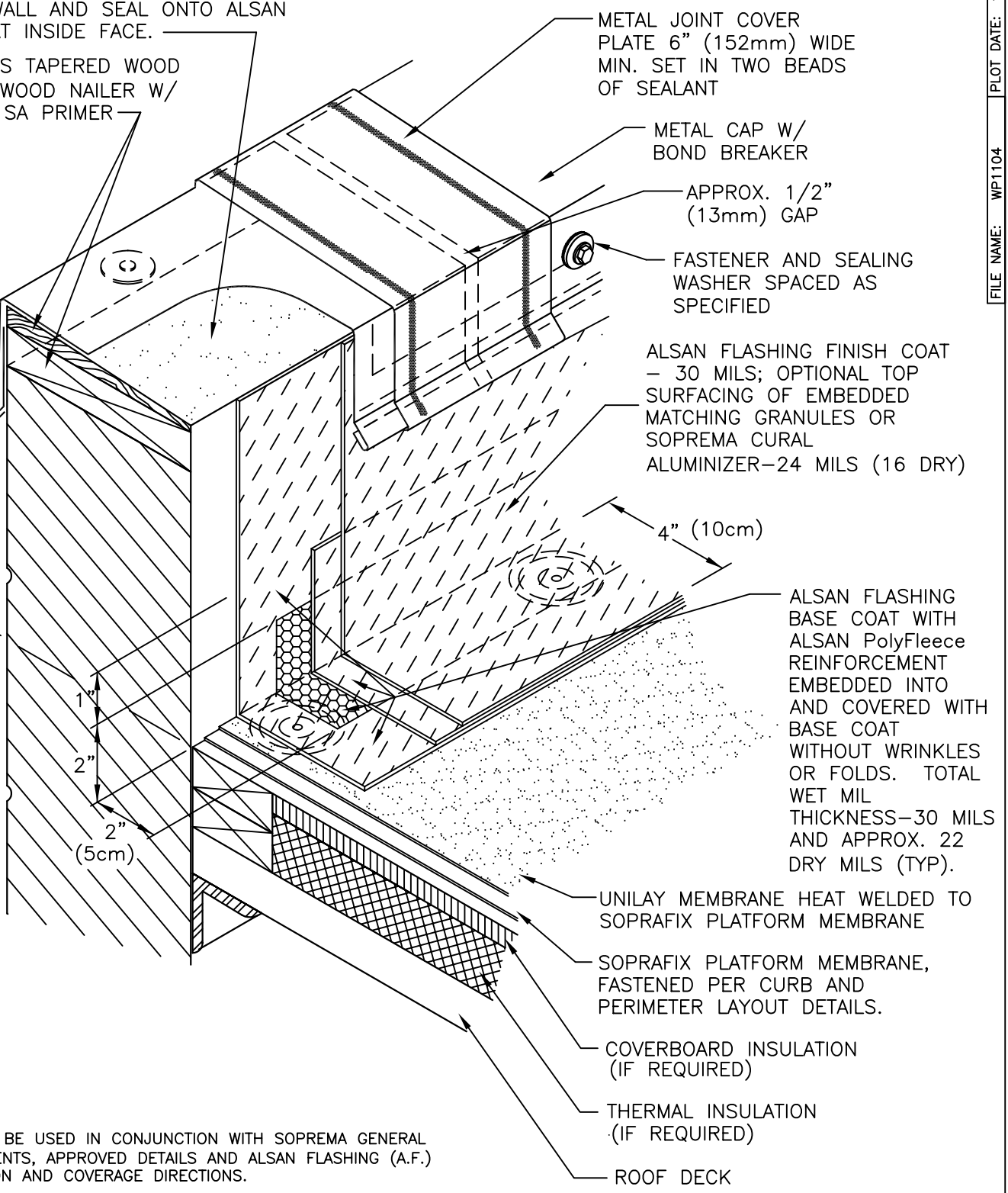


EXTEND HIGH TEMPERATURE SELF-ADHERED MEMBRANE DOWN OUTSIDE FACE OF SOLID MASONRY WALL AND SEAL ONTO ALSAN FLASHING AT INSIDE FACE.

CONTINUOUS TAPERED WOOD SHIM AND WOOD NAILER W/ APPROVED SA PRIMER

MAXIMUM 72" (183cm)  
MINIMUM 5" (13cm)  
1" (25mm) MIN. BELOW BLOCKING



METAL JOINT COVER PLATE 6" (152mm) WIDE MIN. SET IN TWO BEADS OF SEALANT

METAL CAP W/ BOND BREAKER

APPROX. 1/2" (13mm) GAP

FASTENER AND SEALING WASHER SPACED AS SPECIFIED

ALSAN FLASHING FINISH COAT - 30 MILS; OPTIONAL TOP SURFACING OF EMBEDDED MATCHING GRANULES OR SOPREMA CURAL ALUMINIZER-24 MILS (16 DRY)

ALSAN FLASHING BASE COAT WITH ALSAN PolyFleece REINFORCEMENT EMBEDDED INTO AND COVERED WITH BASE COAT WITHOUT WRINKLES OR FOLDS. TOTAL WET MIL THICKNESS-30 MILS AND APPROX. 22 DRY MILS (TYP).

UNILAY MEMBRANE HEAT WELDED TO SOPRAFIX PLATFORM MEMBRANE

SOPRAFIX PLATFORM MEMBRANE, FASTENED PER CURB AND PERIMETER LAYOUT DETAILS.


COVERBOARD INSULATION (IF REQUIRED)

THERMAL INSULATION (IF REQUIRED)

ROOF DECK

NOTES:

1. DETAIL TO BE USED IN CONJUNCTION WITH SOPREMA GENERAL REQUIREMENTS, APPROVED DETAILS AND ALSAN FLASHING (A.F.) APPLICATION AND COVERAGE DIRECTIONS.
2. CURAL 24 WET MIL COVERAGE RATE (DRY 16 MILS) IS 1.5 GALS/100FT<sup>2</sup> ALSAN FLASHING 30 WET MILS COVERAGE RATE (22 DRY MILS) IS 1.87 GALS/100FT<sup>2</sup> ALL COVERAGE RATES ARE APPROXIMATE, THEORETICAL AND DO NOT ACCOUNT FOR WASTE, SPILLAGE, IRREGULAR SURFACES AND APPLICATION TECHNIQUES THAT CAN ALSO VARY WITH INSTALLER. RATES MAY ALSO VARY DEPENDING UPON MATERIAL AND AMBIENT TEMPERATURE(S), SURFACE FINISH AND POROSITY OF THE SUBSTRATE.
3. DETAIL APPROVED FOR SUPPORTED/RESTRAINED WALL OR CURB CONSTRUCTION.

		310 QUADRAL DRIVE	
		WADSWORTH, OHIO 44281	
		(330) 334-0066	
TITLE UNILAY HIGH WALL ALSAN FLASHING W/ COPING			
SCALE	DWN	CHK	APPROVAL DATE
NONE	DMT	PR	10/15/04
DRAWING NUMBER ULWBF-003			REV 0

\*\* USAGE OF THIS DRAWING IS GOVERNED BY THE TERMS OF SERVICE FOR SOPREMA DETAIL. PLEASE CONSULT THESE TERMS OF SERVICE PRIOR TO UTILIZING THIS DRAWING.